

- **Mimi Giraud (BBA 96), Managing Director Asia @ Sourced Group**



Mireille (Mimi) Giraud is the Managing Director ASEAN of Sourced Group, one of Singapore most specialized Cloud consulting firms supporting cloud adoption for highly regulated industries such as Financial Services, Telecoms and Airlines in the region.

Mimi has a successful career in ITC over 28 years on 4 continents and is very experienced in managing large scale programs internationally, including multi-million-dollar deals.

Prior to her General Management role, Mimi worked in Sales, Marketing and Program Management globally for Sprint, Global TeleSystems, WorldCom, MCI, Verizon and Orange Business Services. She also spent 8 years with Schneider Electric bringing her customer experience to Cloud and Services providers and supporting their development in APAC.

She holds an ESSEC BBA diploma as well as an INSEAD Global Executive MBA. She is a wine enthusiast and is the proud founder of A Wine Adventure, a company focused on wine tasting education through games.

She just received the Channel Asia Women In ICT Achievement highly commended award for her career and was a finalist of the Trophée des Français de l'Étranger 2021 for her innovative approach to wine tasting, organic wines and support of female winemakers.

- [Divya Tolath](#) (MBA 20), Regional Account Director @ Gartner APAC



Divya is an ESSEC MBA Graduate (2020) with a focus in Strategy & Management. She currently is a Regional Account Director for Gartner and specializes in Financial Services & Sales. In her role she partners with the C-level suite of global & large enterprises based in APAC & ANZ to identify and deliver on their businesses' strategic imperatives. Prior to the MBA, Divya's experience centered around Talent Management & Recruiting.

Having lived in India, Singapore, Canada & France, Divya has been moulded by her vastly different surroundings to appreciate the uniqueness within us all. If you're ever in the mood for great wine, food and engaging conversation, she'd be more than happy to oblige.

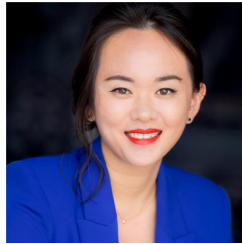
- **Annie Joseph (EXEC MBA 16), Director, BD & Strategic Partnerships @ A*STAR**



Annie Joseph is a Commercial Leader with more than 25 years of experience in the healthcare industry (pharmaceutical, OTC and medical device) in Asia Pacific and International. Acknowledged by peers, Annie received the Women Leadership Excellence Award in 2015 from CMO Asia. She was recently recognised as a Top Future of Work Expert by SpeakIn (2022) for her consistent efforts in speech and thought leadership in people matters, especially in the future of the workforce. Since 2016, Annie has been an entrepreneur, worked with incubating MedTech start-ups at Trendlines Medical and is now the Director of Business Development and Strategic Partnerships at A*STAR.

Annie is a pharmacist by profession (B.Pharm Honors) and holds an EMBA from Essec Manheim Business School and a Postgraduate Diploma in Marketing from CIM(UK). As part of the EMBA program, she did stints with Babson College in Boston on *Innovative Management and Entrepreneurial Leadership* and School of Management Fudan University, China on *Doing Business in China*. She was also awarded the Valedictorian/Best of Class for the Essec-Manheim EMBA program and is the author of ***Pivot Points***. More recently, Annie, a Prosci® Certified Change Practitioner (2022), obtained her Executive Diploma in Board Directorship. She is now an affiliate member of the Singapore Institute of Directors (SID), the Institute of Corporate Directors of Malaysia (ICDM) and part of Board Agender, an initiative of the Singapore Council of Women Organisations (SCWO) to champion gender diversity in business.

- **Subin Hong, Developmental Coach**



As a Certified Coactive and ICF accredited Coach (CPCC,PCC), Subin supports leaders with a global mindset to embark on a transformative journey to unlock their unique brilliance with authenticity, courage and purpose towards inclusive leadership.

She coaches with the belief that each individual is gifted to become uniquely creative (defined as having the courage to bring forth the treasure that lives within them) to live a life of freedom in alignment with their personal values. That entails breaking free from limiting beliefs, gain clarity and be propelled into their destiny as to drive positive impact.

Her 'why' as a coach is seeing the human being and leveraging his/her potential beyond the title, the job, the cultural background. Using a holistic approach to coach, it is tapping into her clients' self leadership, believing that she/he has what it takes to unearth the answers within themselves. Nothing brings her more fulfillment than to see her clients liberated from their inner critic, create their own definition of success and lead from a place of courage and authenticity, inspiring others to do the same! ✨

As a TCK (third culture kid), from Chinese descent, brought up in France and Spain, lived and worked across 5 countries, Subin's worldview gives her the ability to navigate complexity, effectively engage with geographically and culturally diverse teams, bridge the East and the West through her international work and life experiences with a demonstrated history of working across cultures and various industries in luxury fashion and retail real estate, with clients at corporate and individual level.